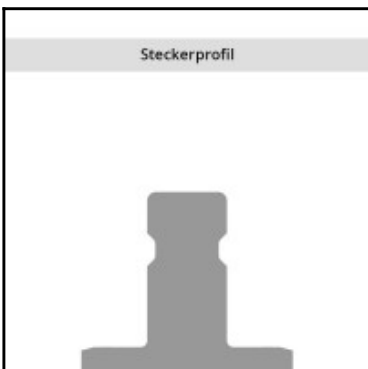
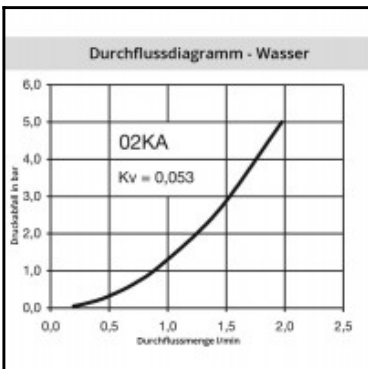
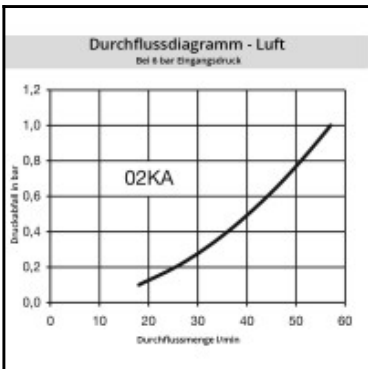
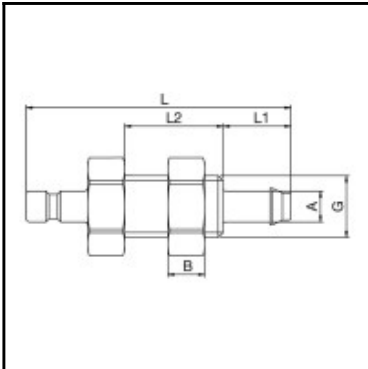


## Datasheet of 02SFTS02MXX Plug for panel mount with hose barb



### Description

Plug straight-through, panel mount with hose barb 2 mm, nominal diameter 1,5, <35 bar, brass

Smallest mini industrial coupling for air and gas applications. Primarily in medicine, didactics and model building. Specific application for liquids due to size. Coupling system with single-hand operation. Extremely small dimensions. Primarily in medicine, didactics and model building. Specific application for liquids due to size. Coupling system with single-hand operation. Extremely small dimensions.

### Details

Series:	02
Series long:	02SF
Bore in mm:	1,5
Bore area in mm²:	1,8
Advantages:	One-hand operation. Extremely small dimensions.
Compatibility:	RECTUS Design
Working pressure:	35 bar maximum static working pressure with safety factor 4 to 1.
Working temperature:	-20°C up to +100°C (NBR) -40°C up to +120/150°C (EPDM) -15°C up to +200°C (FKM) depending on the medium.
Shut-Off:	Plug Straight-Through
Connection:	Panel mount with hose barb 2 mm
Connection description:	Panel mount with hose barb 2 mm
Connection type:	Hose barb
Material:	Brass
Material description:	Brass CuZn39Pb3 2.0401 (except sleeve)
Surface:	blank finish
Weight in kg:	0,002
Self-venting coupling:	No
Safety locking system:	No
Single-hand operation:	Yes
Two-hand operation:	No
Ball locking:	No
Pin lock:	No
Ultra-FLO-valve:	No
Vacuum suitable:	Yes
Water-resistant:	Yes
Flat-sealing:	No
Suitable breath / respiratory protection:	No
Pressure eliminator:	No
Hydraulics:	No
Pneumatics:	Yes
Standard product:	No
Mould coupling:	No

### Dimensions

Connection A:	2 mm
B mm:	3
G mm:	M 5
L mm:	22
L1 mm:	5,5
L2 mm:	8
SW mm:	7
SW1 mm:	7