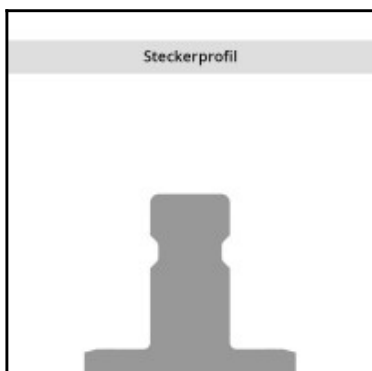
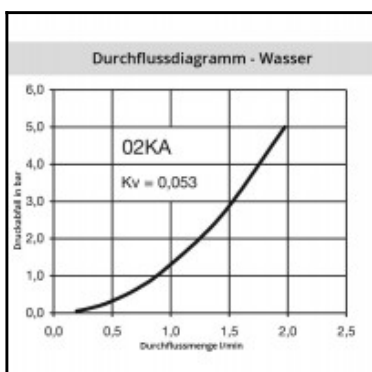
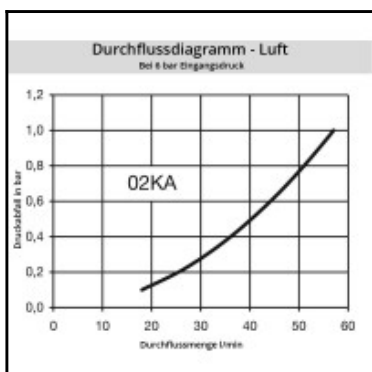
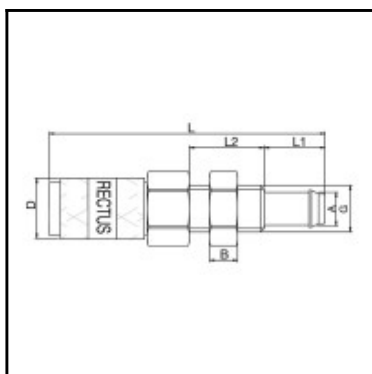


Datasheet of 02KATS03MPN Quick coupling with hose barb in panel mount



Description

Quick coupling single shut-off, panel mount with hose barb 3mm (1/8), nominal diameter 1,5, <35 bar, brass nickel plated, seal NBR

Smallest mini industrial coupling for air and gas applications. Primarily in medicine, didactics and model building. Specific application for liquids due to size. Coupling system with single-hand operation. Extremely small dimensions.

Details

Series:	02
Series long:	02KA
Bore in mm:	1,5
Bore area in mm²:	1,8
Advantages:	One-hand operation. Extremely small dimensions.
Compatibility:	RECTUS Design
Working pressure:	35 bar maximum static working pressure with safety factor 4 to 1.
Working temperature:	-20°C up to +100°C (NBR) -40°C up to +120/150°C (EPDM) -15°C up to +200°C (FKM) depending on the medium.
Shut-Off:	Quick coupling Single Shut-Off
Connection:	Panel mount with hose barb 3mm LW(1/8")
Connection description:	Panel mount with hose barb 3mm LW(1/8")
Connection type:	Hose barb
Material:	Brass nickel plated
Material description:	Brass CuZn39Pb3 2.0401 (except sleeve)
Seal description:	Nitrite-butadiene rubber
Surface:	nickel plated
Material connection:	Brass nickel plated
Material valve body:	Brass nickel plated
Material sleeve:	Brass nickel plated
Material valve:	Brass
Material spring snap ring:	stainless steel AISI 301
Material balls/pins:	Stainless steel AISI 420
Material seal:	Perbunan®
Weight in kg:	0,005
Self-venting coupling:	No
Safety locking system:	No
Single-hand operation:	Yes
Two-hand operation:	No
Ball locking:	Yes
Pin lock:	No
Ultra-FLO-valve:	No
Vacuum suitable:	Yes
Water-resistant:	Yes
Flat-sealing:	No
Suitable breath / respiratory protection:	No
Pressure eliminator:	No
Hydraulics:	No
Pneumatics:	Yes
Standard product:	No
Mould coupling:	No

Dimensions

Connection A:	3 mm
B mm:	3
D mm:	6,5
G mm:	M 5
L mm:	30
L1 mm:	6,5
L2 mm:	8
SW mm:	7
SW1 mm:	7