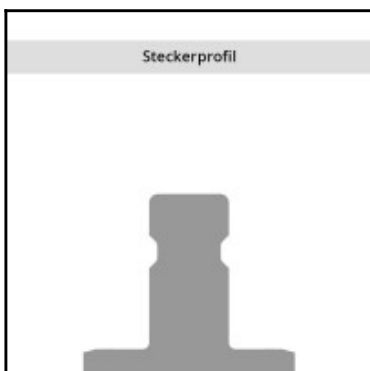
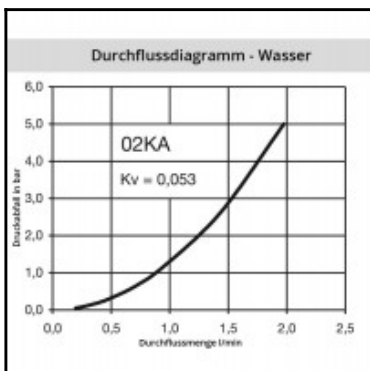
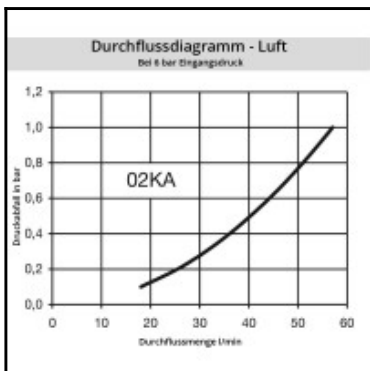
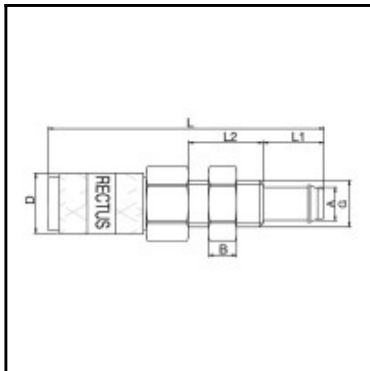


Datasheet of 02KATS02MPX Quick coupling with hose barb in panel mount



Description

Quick coupling single shut-off, panel mount with hose barb 2 mm, nominal diameter 1,5, <35 bar, brass, seal NBR

Smallest mini industrial coupling for air and gas applications. Primarily in medicine, didactics and model building. Specific application for liquids due to size. Coupling system with single-hand operation. Extremely small dimensions. Primarily in medicine, didactics and modelbuilding. Specific application for liquids due to size. Coupling system with single-hand operation. Extremely small dimensions.

Details

Series:	02
Series long:	02KA
Bore in mm:	1,5
Bore area in mm²:	1,8
Advantages:	One-hand operation. Extremely small dimensions.
Compatibility:	RECTUS Design
Working pressure:	35 bar maximum static working pressure with safety factor 4 to 1.
Working temperature:	-20°C up to +100°C (NBR) -40°C up to +120/150°C (EPDM) -15°C up to +200°C (FKM) depending on the medium.
Shut-Off:	Quick coupling Single Shut-Off
Connection:	Panel mount with hose barb 2 mm
Connection description:	Panel mount with hose barb 2 mm
Connection type:	Hose barb
Material:	Brass
Material description:	Brass CuZn39Pb3 2.0401 (except sleeve)
Seal description:	Nitrite-butadiene rubber
Surface:	blank finish
Material connection:	Brass
Material valve body:	Brass
Material sleeve:	Brass
Material valve:	Brass
Material spring snap ring:	stainless steel AISI 301
Material balls/pins:	Stainless steel AISI 420
Material seal:	Perbunan®
Weight in kg:	0,004
Self-venting coupling:	No
Safety locking system:	No
Single-hand operation:	Yes
Two-hand operation:	No
Ball locking:	Yes
Pin lock:	No
Ultra-FLO-valve:	No
Vacuum suitable:	Yes
Water-resistant:	Yes
Flat-sealing:	No
Suitable breath / respiratory protection:	No
Pressure eliminator:	No
Hydraulics:	No
Pneumatics:	Yes
Standard product:	No
Mould coupling:	No

Dimensions

Connection A:	2 mm
B mm:	3
D mm:	6,5
G mm:	M 5
L mm:	29
L1 mm:	5,5
L2 mm:	8
SW mm:	7
SW1 mm:	7