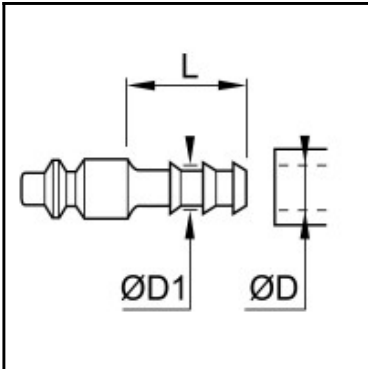


Datasheet of 0185 04 00 Plug with hose barb



Description

Plug straight-through, hose barb 4mm LW(3/16"), nominal diameter 5, <20 bar, galvanized steel

The standard range offers a robust construction and a good compromise between size and flow performance.

- Robust construction - perfect solution for demanding applications
- Nickel-plated brass for corrosion resistance

Details

Series:	Standard
ØD:	4
ØD1:	6
L:	22,5
Flow rate in l/min:	480 (air)
Material connection:	Galvanized steel
Series long:	Standard
Working temperature:	-20°C to +80°C (NBR)
Surface:	zinc plated
Shut-Off:	Plug Straight-Through
Connection:	Hose barb 4mm LW(3/16")
Material sleeve:	Galvanized steel
Connection type:	Hose barb
Connection tube outside diameter 2:	4
Connection tube outside diameter 3:	6
Bore in mm:	5
Maximum working pressure in bar:	20
Material:	Galvanized steel
RoHS compliant:	Yes
Weight in kg:	0,014

Dimensions

ØD:	4
ØD1:	6
L:	22,5