

Datasheet of QR-824 Quick-action chuck



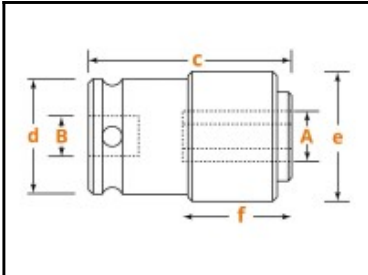
Description

Internal square drive for 3/4" bits with power drive, square drive 1"

Quick-action chuck for quick replacement of power-driven bits. The bit is held securely in the chuck. The bit is released again by moving the knurled sleeve.

Details

B:	1"
Drive:	1" Internal square drive
Weight in kg:	0,3
Material:	Tool steel



Dimensions

A:	3/4"
B:	1"
c in mm:	95
d in mm:	51
e in mm:	48
f in mm:	41