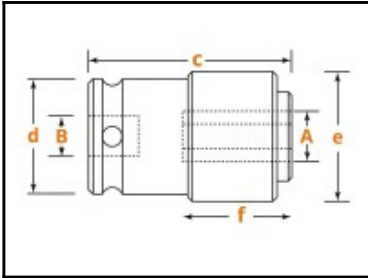


## Datasheet of QR-614 Quick-action chuck



### Description

Internal square drive for 7/16" bits with power drive, square drive 5/8"

Quick-action chuck for quick replacement of power-driven bits. The bit is held securely in the chuck. The bit is released again by moving the knurled sleeve.

### Details

|               |                            |
|---------------|----------------------------|
| B:            | 5/8"                       |
| Drive:        | 5/8" Internal square drive |
| Weight in kg: | 0,3                        |
| Material:     | Tool steel                 |

### Dimensions

|          |       |
|----------|-------|
| A:       | 7/16" |
| B:       | 5/8"  |
| c in mm: | 54    |
| d in mm: | 32    |
| e in mm: | 32    |
| f in mm: | 27    |