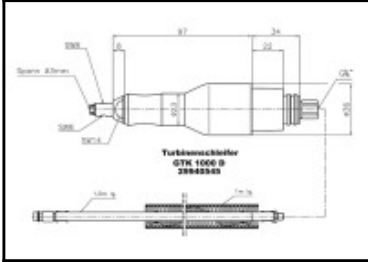


## Datasheet of Turbine grinder GTK 1000 D



### Description

80.000 min<sup>-1</sup>, 100 Watt, oil-free operation, with floating support, rotary valve

- High speed for excellent finishing quality
- Easy to service
- High true running accuracy for long term endurance
- Ball bearings with floating support to reduce wear of the rotary burrs
- Non-lubricated use

### Details

Idling speed rpm:	80000
Length in mm:	135
Exhaust Air:	to rear
Carbide burrs up to max. diam.:	3
Mounted points up to max. diam.:	5
Noise level in dB(A):	66
Air consumption in l/s:	4,5
Weight without hose in kg:	0,27
Hose unit:	included
Connection:	Plug
Accessories supplied:	Wrench
Item number:	29940545

### Dimensions

Diameter in mm:	22
Length in mm:	135