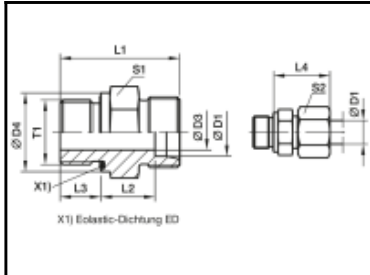
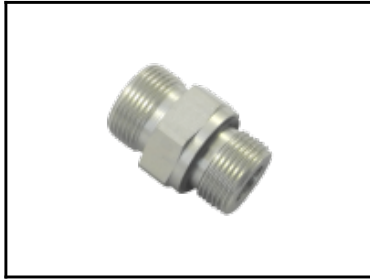


Datasheet of GE28LMEDOMDCF Male stud connector



Description

Tube outside diameter 28 mm, M 33×2,0, galvanized steel, EO 24° cone end, light series

The main function of Ermeto DIN male stud high pressure hydraulic tube fittings is to connect different numbers of tubes or hoses. This broad range of fittings, types GEO, GE-M-ED, GE-R-ED up to GE-M is available in steel and in a stainless steel version. Depending on the specific application, these fittings can be delivered with cutting ring (EO-PSR or DPR) or elastomeric seal (EO-2).

Markets:

- Automotive
- Defence
- Energy
- Environment
- Industrial
- Infrastructure
- Machine Tools
- Materials Handling
- Mobile
- Oil and Gas
- Power Generation
- Process
- Transportation
- Water

Applications:

- Suitable for general hydraulic applications.

Features/ benefits:

- Steel and Stainless steel fittings have a high corrosion resistance to aggressive media and environmental influences. These features extend the range of applications.
- High pressure: Ermeto DIN male stud high pressure hydraulic tube fittings have pressure ratings of up to 800 bar (S series) and 500 bar (L series), so that the fittings can be used in a wide range of applications.

Details

L1:	43
L2:	17,5
L3:	18
ØD1:	28
ØD3:	23
Form:	Male stud connector
Connection tube outside diameter 2:	28 mm
Material:	Galvanized steel
Maximum working pressure in bar:	250
Working temperature:	-40°C up to 250°C
Specifications met:	DIN ISO 8434

Dimensions

Size connection 1:	M 33x2.0
Connection 1:	Metric Male Thread - ED (ISO 9974)
Connection 2:	24° cone end
T1:	M 33×2,0
L1:	43
L2:	17,5
L3:	18
L4:	34
ØD1:	28
ØD3:	23
ØD4:	40
S1:	41
S2:	41