

## Datasheet of 26KPIW13APX Quick coupling self-venting



### Description

Quick coupling Self-Venting system, with Push Button, female thread 1/4", NW 7,4, <12 bar, anodised aluminium, seal NBR

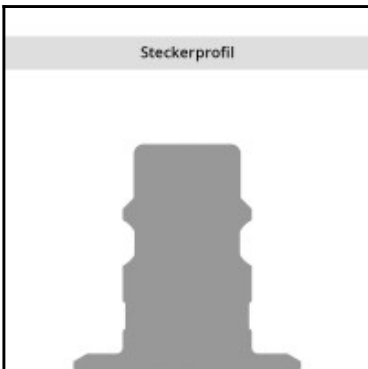
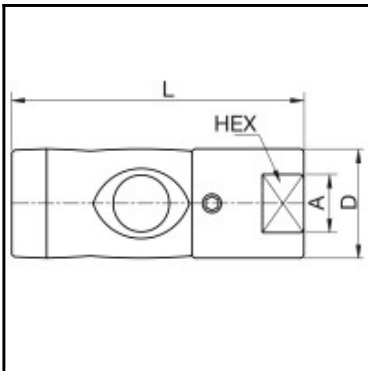
Pressureless disconnection guarantees absolute safety.

No risk of pressurised hoses being tossed around

Simply push once to stop airflow and to vent the circuit, twice to release and disconnect the plug.

Comfortable to handle, easy to use, to connect and to disconnect. Push button couplings allows an intuitive and effortless handling, with one hand orientable. The push button coupling facilitates assembly and disassembly in all the environment.

### Details



Series:	26
Series long:	26KP
Bore in mm:	7,4
Bore area in mm²:	43
Compatibility:	EURO Profile
Working pressure:	12 bar
Working temperature:	-20°C up to +100°C
Shut-Off:	Quick coupling Self-Venting system
Connection:	Female thread 1/4"
Connection description:	Female pipe thread of Whitworth form ISO 228 1/4"
Material:	Aluminium anodized
Seal description:	Nitrite-butadiene rubber
Surface:	anodized
Coding:	No
Material connection:	Brass nickel plated
Material valve body:	Galvanized steel
Material sleeve:	Aluminium black anodised
Material valve:	Galvanized steel
Material spring snap ring:	stainless steel AISI 301
Material balls/pins:	Stainless steel AISI 420
Material seal:	NBR
Weight in kg:	0,15
Push button:	Yes
Self-venting coupling:	Yes
Safety locking system:	Yes
Single-hand operation:	Yes
Two-hand operation:	No
Ball locking:	No
Pin lock:	No
Ultra-FLO-valve:	No
Vacuum suitable:	No
Water-resistant:	No
Flat-sealing:	No
Suitable breath / respiratory protection:	No
Pressure eliminator:	No
Hydraulics:	No
Pneumatics:	Yes
Standard product:	No
Mould coupling:	No

### Dimensions

Connection A:	G 1/4
D mm:	26
L mm:	70,4
SW mm:	22