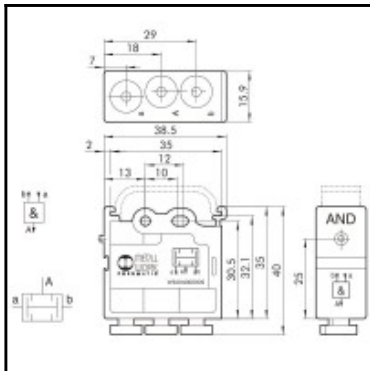


Datasheet of Logic element AND



Description

Logic product, 1,5-8 bar, 4mm push-in connection

Metal Work logic elements are available with 5 different functions: OR, AND, NOT, YES, MEMORY.

Main features common to all elements:

- Adaptor for ? bar (DIN EN 50022) integral with the body.
- Built-in pressure indicator.
- Pipe locking system using Ø 4 built-in fittings.

Details

Flow rate in l/min:	100 (at 6 bar)
Medium suitability:	Filtered, lubricated or unlubricated compressed air. If used, must be continuous.
Connection:	Push-in fitting 4 mm outside calibrated
Installation:	An Omegaschiene (DIN EN 50022) Größe 35 x 7 oder 35 x 15 Wandmontage mit Löchern Ø 4.2
Mounting position:	In any position
Actuation:	Pneumatic
Resetting:	via compressed air
Working pressure:	1,5 – 8 bar
Material seal:	NBR
Material body:	Technopolymer
#NV:	Aluminium
Weight in kg:	0,3

Dimensions