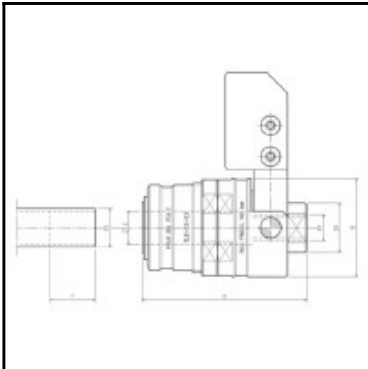
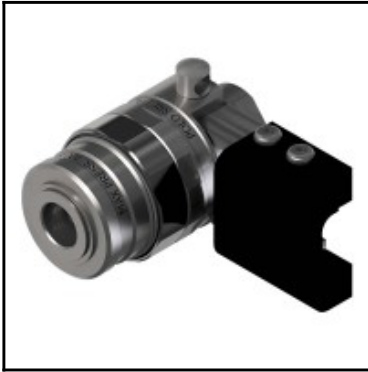


## Datasheet of TLE06-8÷16-14



### Description

Quick coupling Straight-Through for smooth pipes, 1/4" G, 8,5÷16,5 mm, lever actuation, up to 200 bar, stainless steel

- Quick connector for the connection on the external surface of smooth pipes
- Hand actuation, with lever
- Adjustable locking system
- Free flow
- Stainless steel
- Working pressure: from vacuum up to 200 bar (specifications for vacuum pressures on demand)

### Details

Maximum working pressure in bar:	200
Shut-Off:	Quick coupling Straight-Through
Connection description:	for 1/4" pipes
Connection type:	for 1/4" pipes
Material:	Stainless steel
Weight in kg:	0,3
Self-venting coupling:	No
Safety locking system:	No
Two-hand operation:	No
Ball locking:	No
Pin lock:	No
Vacuum suitable:	Yes
Water-resistant:	Yes
Flat-sealing:	No
Hydraulics:	Yes
Pneumatics:	Yes
Standard product:	Yes
Mould coupling:	No

### Dimensions

A mm:	63,5
B mm:	38
ØC mm:	8,5÷16,5
CH mm:	19
FA mm:	8÷16
FP mm:	1/4"
P mm:	32