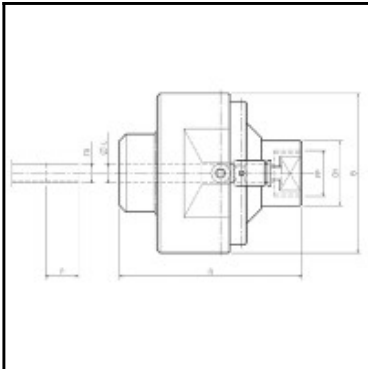


Datasheet of SLE14-24÷34-34



Description

Quick coupling Straight-Through for smooth pipes, 1/4" G, 26,5÷34,5 mm, screw lock, up to 200 bar, stainless steel

- Quick connector for the connection on the external surface of smooth pipes
- Hand actuation, with locking and unlocking screw system (+ - 90° rotation)
- Free flow
- Stainless steel
- Working pressure: from vacuum up to 200 bar (specifications for vacuum pressures on demand)

Details

Maximum working pressure in bar:	50
Shut-Off:	Quick coupling Straight-Through
Connection description:	for 3/4" pipes
Connection type:	for 3/4" pipes
Material:	Stainless steel
Weight in kg:	0,75
Self-venting coupling:	No
Safety locking system:	No
Two-hand operation:	No
Ball locking:	No
Pin lock:	No
Vacuum suitable:	Yes
Water-resistant:	Yes
Flat-sealing:	No
Hydraulics:	Yes
Pneumatics:	Yes
Standard product:	Yes
Mould coupling:	No

Dimensions

A mm:	74
B mm:	62
ØC mm:	26,5÷34,5
CH mm:	32
FA mm:	26÷34
FP mm:	3/4"
P mm:	30