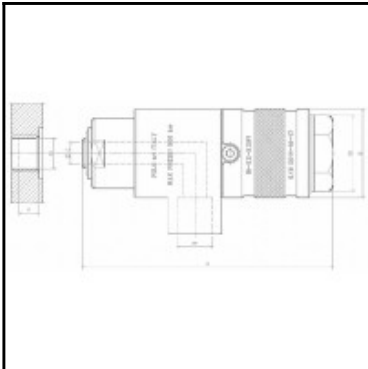


Datasheet of IG-14-14NV Quick coupling



Description

Quick coupling Single Shut-Off for female threads and shaped elements, inlet at 90°, 1/4" G, up to 500 bar, stainless steel

- Quick connector for female threads and shaped elements
- Push-pull hand actuation
- Double actuation ring
- Additional safety system against inadvertent disconnection
- Inlet at 90° of the fluid test
- Integrated shut-off valve
- Internal chamber for the pressure compensation
- Stainless steel
- Working pressure: from 0 up to 500 bar

Details

Maximum working pressure in bar:	350
Shut-Off:	Quick coupling Single Shut-Off
Connection description:	for 1/4" female thread
Connection type:	for 1/4" female thread
Material:	Stainless steel
Weight in kg:	0,25
Self-venting coupling:	No
Safety locking system:	Yes
Two-hand operation:	No
Ball locking:	No
Pin lock:	No
Vacuum suitable:	Yes
Water-resistant:	Yes
Flat-sealing:	No
Hydraulics:	Yes
Pneumatics:	Yes
Standard product:	Yes
Mould coupling:	No

Dimensions

A mm:	93
B mm:	33
ØC mm:	5
CH mm:	24
FA mm:	1/4"
FP mm:	1/4"
P mm:	6,5