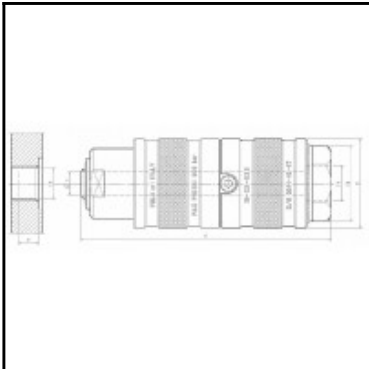


Datasheet of IG-12-12D Quick coupling



Description

Quick coupling Straight-Through for female threads and shaped elements, 1/2" G, up to 500 bar, stainless steel

- Quick connector for female threads and shaped elements
- Push-pull hand actuation
- Double actuation ring
- Additional safety system against inadvertent disconnection
- In-line inlet of the test fluid
- Internal chamber for the pressure compensation
- Stainless steel
- Working pressure: from 0 up to 500 bar

Details

Maximum working pressure in bar:	350
Shut-Off:	Quick coupling Straight-Through
Connection description:	for 1/2" female thread
Connection type:	for 1/2" female thread
Material:	Stainless steel
Weight in kg:	0,42
Self-venting coupling:	No
Safety locking system:	Yes
Two-hand operation:	No
Ball locking:	No
Pin lock:	No
Vacuum suitable:	Yes
Water-resistant:	Yes
Flat-sealing:	No
Hydraulics:	Yes
Pneumatics:	Yes
Standard product:	Yes
Mould coupling:	No

Dimensions

A mm:	115
B mm:	50
ØC mm:	10
CH mm:	36
FA mm:	1/2"
FP mm:	1/2"
P mm:	10