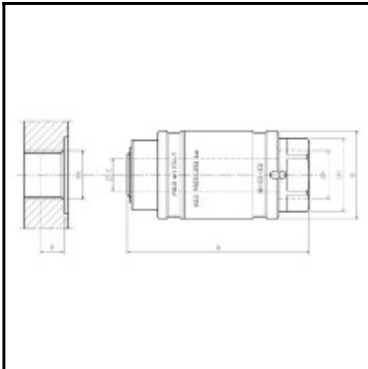


Datasheet of IG-38-38A Quick coupling



Description

Quick coupling Straight-Through for female threads and shaped elements, 3/8" G, up to 350 bar, Aluminium

- Quick connector for female threads and shaped elements
- Push-pull hand actuation
- Additional safety system against inadvertent disconnection
- Free flow
- Aluminium
- Working pressure: from 0 up to 350 bar

Details

Maximum working pressure in bar:	350
Shut-Off:	Quick coupling Straight-Through
Connection description:	for 3/8" female thread
Connection type:	for 3/8" female thread
Material:	Aluminium
Weight in kg:	0,23
Self-venting coupling:	No
Safety locking system:	Yes
Two-hand operation:	No
Ball locking:	No
Pin lock:	No
Vacuum suitable:	Yes
Water-resistant:	Yes
Flat-sealing:	No
Hydraulics:	Yes
Pneumatics:	Yes
Standard product:	Yes
Mould coupling:	No

Dimensions

A mm:	65
B mm:	34
ØC mm:	6
CH mm:	24
FA mm:	3/8"
FP mm:	3/8"
P mm:	6,5