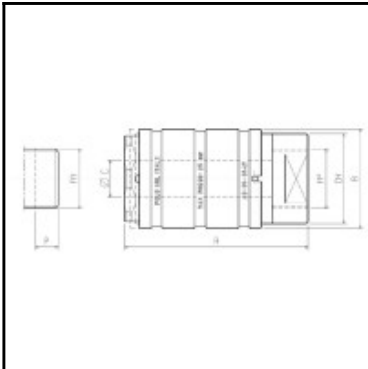


Datasheet of AG-1-1AV Quick coupling



Description

Quick coupling Single Shut-Off for male threads and shaped elements, 1" G, up to 400 bar, Aluminium

- Quick connector for male threads and shaped elements
- Push-pull hand actuation
- Additional safety system against inadvertent disconnection
- Integrated shut-off valve
- Anodized aluminium
- Working pressure: from vacuum up to 50 bar (specifications for vacuum pressures on demand)

Details

Maximum working pressure in bar:	400
Shut-Off:	Quick coupling Single Shut-Off
Connection description:	for 1" male thread
Connection type:	for 1" male thread
Material:	Aluminium
Weight in kg:	0,42
Self-venting coupling:	No
Safety locking system:	Yes
Two-hand operation:	No
Ball locking:	No
Pin lock:	No
Vacuum suitable:	Yes
Water-resistant:	Yes
Flat-sealing:	No
Hydraulics:	Yes
Pneumatics:	Yes
Standard product:	Yes
Mould coupling:	No

Dimensions

A mm:	90
B mm:	54
ØC mm:	20
CH mm:	46
FA mm:	1"
FP mm:	1"
P mm:	15