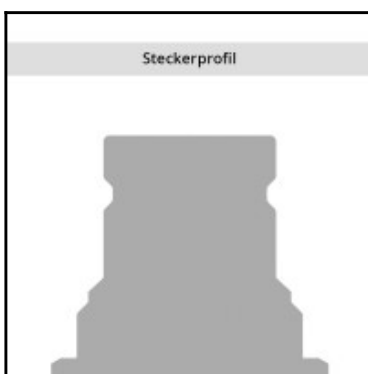
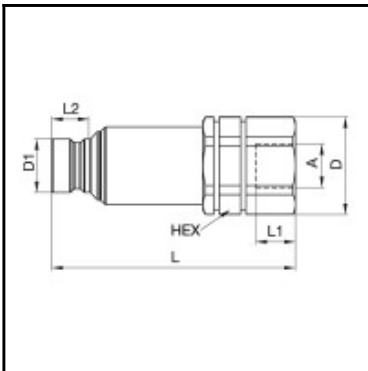


Datasheet of FEC-752-16FB Hydraulic plug



Description

Hydraulic plug double shut-off with pressure eliminator, female thread G 1", nominal diameter 19, 250 bar, steel, seal NBR

The FEM, FEC and IF series plug profile are produced according to ISO Standard 16028 and are compatible with other series complying with the same standard. These couplings offer a leakage free disconnection – minimal oil loss during uncoupling. Thanks to the valve design, the coupling has a minimum pressure drop, and thus achieves maximum cost-effectiveness. Exists in standard version (steel) and stainless steel.

Details

Series:	FEM/IF
Old order number:	IF7521-100
Series long:	IF7500
Bore in mm:	19
Bore area in mm²:	280
Size in general:	3/4"
Advantages:	Can be operated with use of one hand- Safety locking feature as standard to prevent unintentional uncoupling.
Coupled working pressure in bar:	250
Working temperature:	-30°C up to +100°C (NBR) -25°C up to +200°C (FKM) depending on the medium.
Shut-Off:	Plug Double Shut-Off
Connection:	Female thread 1"
Connection type:	Female thread
Material:	Steel
Surface:	zinc plated, passivated, sealed
Material valve body:	steel hardened
Material valve:	Steel, zinc-plated, passivated, sealed
Material valve holder:	Brass
Material spring snap ring:	1.4310
Material valve pressure eliminator:	Brass
Material valve holder pressure eliminator:	Zinc cast
Weight in kg:	0,858
Safety locking system:	Yes
Single-hand operation:	Yes
Two-hand operation:	No
Ball locking:	Yes
Vacuum suitable:	No
Flat-sealing:	No
Pressure eliminator:	Yes
Hydraulics:	Yes

Dimensions

Connection A:	G 1"
D mm:	54
D1 mm:	30
L mm:	120
L1 mm:	16
L2 mm:	22
SW mm:	50