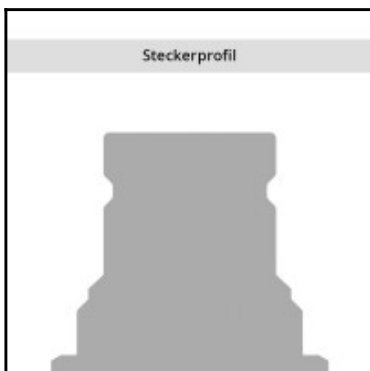
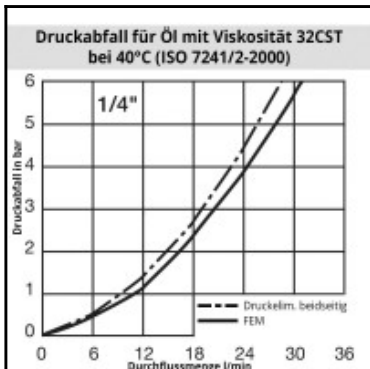
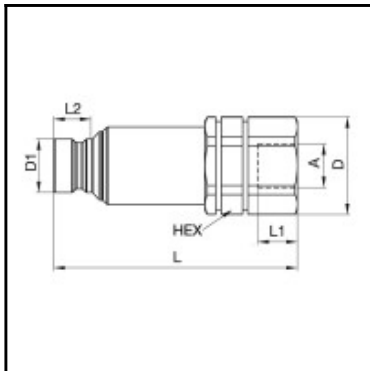


## Datasheet of FEC-252-4FB Hydraulic plug



### Description

Hydraulic plug double shut-off with pressure eliminator, female thread G 1/4", nominal diameter 6,3, 315 bar, steel, seal NBR

The FEM, FEC and IF series plug profile are produced according to ISO Standard 16028 and are compatible with other series complying with the same standard. These couplings offer a leakage free disconnection – minimal oil loss during uncoupling. Thanks to the valve design, the coupling has a minimum pressure drop, and thus achieves maximum cost-effectiveness. Exists in standard version (steel) and stainless steel.

### Details

Series:	FEM/IF
Old order number:	IF2521
Series long:	IF2500
Bore in mm:	6,3
Bore area in mm²:	31
Size in general:	1/4"
Advantages:	Can be operated with use of one hand- Safety locking feature as standard to prevent unintentional uncoupling.
Coupled working pressure in bar:	315
Working temperature:	-30°C up to +100°C (NBR) -25°C up to +200°C (FKM) depending on the medium.
Shut-Off:	Plug Double Shut-Off
Connection:	Female thread 1/4"
Connection type:	Female thread
Material:	Steel
Surface:	zinc plated, passivated, sealed
Material valve body:	steel hardened
Material valve:	Steel, zinc-plated, passivated, sealed
Material valve holder:	Brass
Material spring snap ring:	1.4310
Material valve pressure eliminator:	Brass
Material valve holder pressure eliminator:	Zinc cast
Weight in kg:	0,174
Safety locking system:	Yes
Single-hand operation:	Yes
Two-hand operation:	No
Ball locking:	Yes
Vacuum suitable:	No
Flat-sealing:	No
Pressure eliminator:	Yes
Hydraulics:	Yes

### Dimensions

Connection A:	G 1/4"
D mm:	29,5
D1 mm:	16,1
L mm:	74
L1 mm:	12
L2 mm:	11,3
SW mm:	27