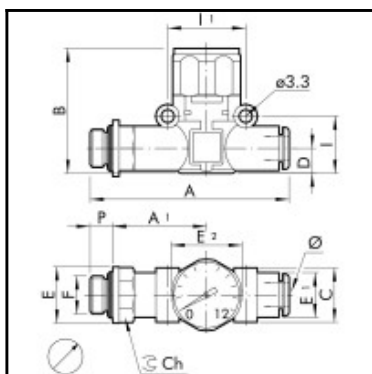


Datasheet of 9067101 – IN-LINE PRESSURE GAUGE thread-pipe M5-Ø4



Description

Inline pressure gauge, thread-pipe M5-Ø4, 12 bar

The MAN L pressure gauge belongs to the LINE ON LINE® family, which means it can be connected to all the other components in series or in parallel.

Available in the version for pipe-pipe connection with two push-in fittings, and in the version for thread-pipe connection with a brass nickel-plated male thread and a push-in fitting.

Though small in size, this pressure gauge, which is supplied in a metal casing, ensures accurate reading.

Details

F:	M5
B:	36,1
C:	10,7
E:	9,9
E1:	10
E2:	23
Medium suitability:	Filtered, lubricated or unlubricated, compressed air. Lubrication, if used, must be continuous.
Working temperature:	-20 – +60 °C
Working pressure:	12 bar
Precision:	± 4 % vom Endausschlag
Recommended pipe:	Rilsan PA 11 – Nylon 6 – Polyamide 12 – Polypropylene.
Weight in kg:	0,031

Dimensions

Connection 1:	Male thread M 5
Connection 2:	Push-in fitting 4 mm outside calibrated
F:	M5
Ø:	4
A:	47,7
A1:	26,7
B:	36,1
C:	10,7
Ch:	9
D:	5,6
E:	9,9
E1:	10
E2:	23
I:	12,8
I1:	16
P:	4