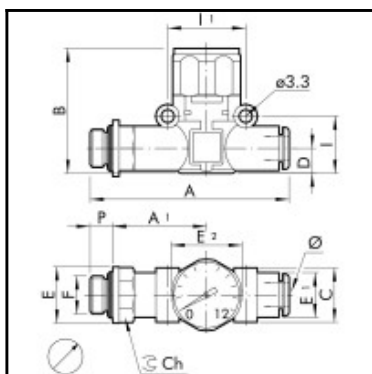


Datasheet of 9067110 – IN-LINE PRESSURE GAUGE thread-pipe 1/8-Ø8



Description

Inline pressure gauge, thread-pipe 1/8-Ø8, 12 bar

The MAN L pressure gauge belongs to the LINE ON LINE® family, which means it can be connected to all the other components in series or in parallel.

Available in the version for pipe-pipe connection with two push-in fittings, and in the version for thread-pipe connection with a brass nickel-plated male thread and a push-in fitting.

Though small in size, this pressure gauge, which is supplied in a metal casing, ensures accurate reading.

Details

F:	1/8
B:	41
C:	18,7
E:	15
E1:	13,8
E2:	23
Medium suitability:	Filtered, lubricated or unlubricated, compressed air. Lubrication, if used, must be continuous.
Working temperature:	-20 – +60 °C
Working pressure:	12 bar
Precision:	± 4 % vom Endausschlag
Recommended pipe:	Rilsan PA 11 – Nylon 6 – Polyamide 12 – Polypropylene.
Weight in kg:	0,059

Dimensions

Connection 1:	Male thread G 1/8
Connection 2:	Push-in fitting 8 mm outside calibrated
F:	1/8
Ø:	8
A:	66,2
A1:	31,8
B:	41
C:	18,7
Ch:	14
D:	9,1
E:	15
E1:	13,8
E2:	23
I:	18,7
I1:	24
P:	6