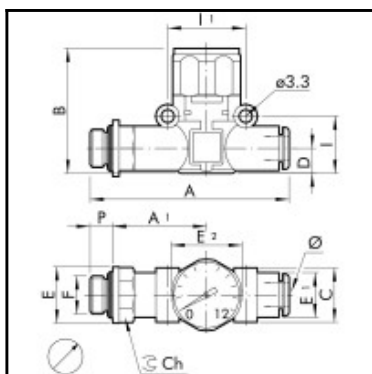


Datasheet of 9067108 – IN-LINE PRESSURE GAUGE thread-pipe 1/8-Ø6



Description

Inline pressure gauge, thread-pipe 1/8-Ø6, 12 bar

The MAN L pressure gauge belongs to the LINE ON LINE® family, which means it can be connected to all the other components in series or in parallel.

Available in the version for pipe-pipe connection with two push-in fittings, and in the version for thread-pipe connection with a brass nickel-plated male thread and a push-in fitting.

Though small in size, this pressure gauge, which is supplied in a metal casing, ensures accurate reading.

Details

F:	1/8
B:	35
C:	14,7
E:	14
E1:	11,4
E2:	23
Medium suitability:	Filtered, lubricated or unlubricated, compressed air. Lubrication, if used, must be continuous.
Working temperature:	-20 – +60 °C
Working pressure:	12 bar
Precision:	± 4 % vom Endausschlag
Recommended pipe:	Rilsan PA 11 – Nylon 6 – Polyamide 12 – Polypropylene.
Weight in kg:	0,044

Dimensions

Connection 1:	Male thread G 1/8
Connection 2:	Push-in fitting 6 mm outside calibrated
F:	1/8
Ø:	6
A:	58,5
A1:	27,8
B:	35
C:	14,7
Ch:	12
D:	6,4
E:	14
E1:	11,4
E2:	23
I:	14,6
l1:	20
P:	6