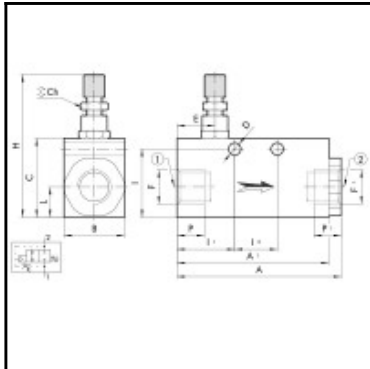


Datasheet of W3606000002 – IN-LINE PROGRESSIVE STARTER VAP 1/4



Description

Inline progressive starter, female thread 1/4", 1.500 NI/min flow rate, anodized aluminium

The in-line progressive starter is a valve that regulates the flow of air until the outlet pressure reaches a certain value, at which the valve opens and allows air to flow at full rate.

This valve can be used to control a group of valves or a single valve, or it can be mounted between another valve and an actuator.

The air that enters inlet 1 passes through a choke that has a knob adjustment to control the flow. The valve opens completely when the outlet pressure reaches about 60% of the inlet pressure.

If the air supply is switched off, the valve discharges air from outlet 2 to inlet 1.

Details

Flow rate in l/min:	1500 NI/min (at 6.3 bar, ?P=1 bar)
F:	G 1/4
F1:	G 1/4
B:	20
C:	30
E:	10
H:	49-52
L:	10
Medium suitability:	Filtered, lubricated or unlubricated, compressed air. Lubrication, if used, must be continuous.
Connection:	Female thread 1/4"
Switching pressure:	About 60% of inlet pressure
max. operating frequency:	5 Hz
Working temperature:	-10 – +70 °C
Screw size:	Min. M4x25
Mounting position:	In any position
Maximum working pressure in bar:	2 bar
Maximum working pressure in bar:	10 bar
Flow rate through flow regulator:	max. 200 NI/min (at 6.3 bar)
Function:	2/2 NC
Material body:	Anodized aluminium
Weight in kg:	0,09

Dimensions

F:	G 1/4
F1:	G 1/4
A:	56
A1:	50
B:	20
C:	30
Ch:	8
D:	4,5
E:	10
H:	49-52
I:	25,5
I1:	18
I2:	16
L:	10
P:	9
P1:	9