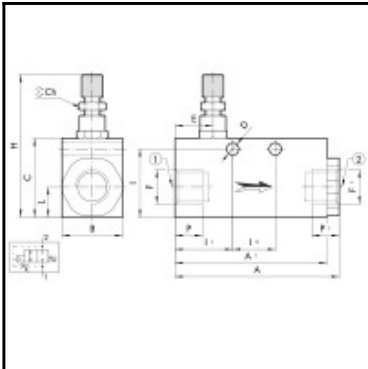


## Datasheet of W3606000004 – IN-LINE PROGRESSIVE STARTER VAP 1/2



### Description

Inline progressive starter, female thread 1/2", 3.100 NI/min flow rate, anodized aluminium

The in-line progressive starter is a valve that regulates the flow of air until the outlet pressure reaches a certain value, at which the valve opens and allows air to flow at full rate.

This valve can be used to control a group of valves or a single valve, or it can be mounted between another valve and an actuator.

The air that enters inlet 1 passes through a choke that has a knob adjustment to control the flow. The valve opens completely when the outlet pressure reaches about 60% of the inlet pressure.

If the air supply is switched off, the valve discharges air from outlet 2 to inlet 1.

### Details

Flow rate in l/min:	3100 NI/min (at 6.3 bar, ?P=1 bar)
F:	G 1/2
F1:	G 1/2
B:	30
C:	40
E:	13
H:	59-62
L:	15
Medium suitability:	Filtered, lubricated or unlubricated, compressed air. Lubrication, if used, must be continuous.
Connection:	Female thread 1/2"
Switching pressure:	About 60% of inlet pressure
max. operating frequency:	5 Hz
Working temperature:	-10 – +70 °C
Screw size:	Min. M4x35
Mounting position:	In any position
Maximum working pressure in bar:	2 bar
Maximum working pressure in bar:	10 bar
Flow rate through flow regulator:	max. 300 NI/min (at 6.3 bar)
Function:	2/2 NC
Material body:	Anodized aluminium
Weight in kg:	0,22

### Dimensions

F:	G 1/2
F1:	G 1/2
A:	75,8
A1:	65
B:	30
C:	40
Ch:	8
D:	4,5
E:	13
H:	59-62
I:	35,5
I1:	26,5
I2:	16
L:	15
P:	12
P1:	12