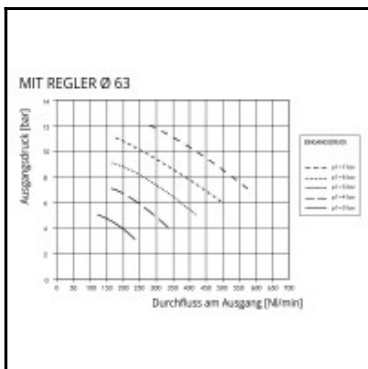
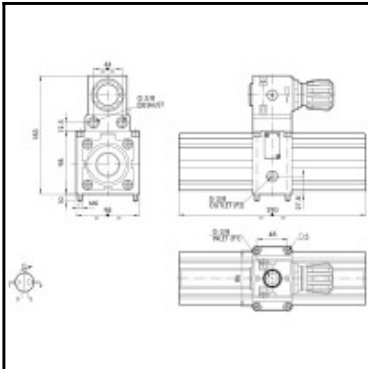


Datasheet of 9002600 – Booster Ø=63mm with regulator



Description

Booster Ø=63mm, with regulator, female thread G 1/8"

The air-air pressure multiplier, or booster, is an automatic device that compresses air to give an outlet pressure that is double the inlet pressure. It is normally used to locally intensify the input pressure of one or more actuators. As it is entirely pneumatic it can be used when electric devices are not recommended.

The booster can be supplied with or without a pressure regulator. It is fitted with check valves that maintain the outlet pressure even when the supply of compressed air is switched off. This means it is necessary to interrupt the supply and relieve the circuit before intervening on the device in any way. It is advisable to install a tank after the booster to prevent fluctuations in outlet pressure.

Details

Medium suitability:	Filtered air without lubrication; lubrication, if used, must be continuous
Connection:	Female thread G 3/8"
Inlet pressure:	2 ÷ 10
Outlet pressure:	max. 16
Working temperature:	-10°C – +50°C
Installation:	Wall or panel
Mounting position:	In any position
Weight in kg:	5,35

Dimensions

Diameter in mm:	63
-----------------	----