

Datasheet of 9002100 – Booster Ø=40mm



Description

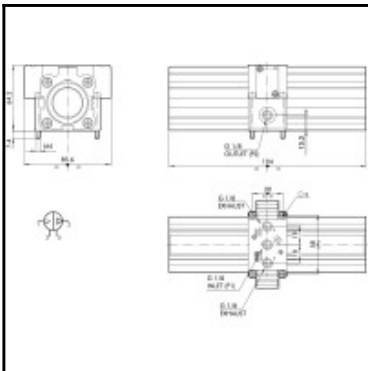
Booster Ø=40mm, female thread G 1/8"

The air-air pressure multiplier, or booster, is an automatic device that compresses air to give an outlet pressure that is double the inlet pressure. It is normally used to locally intensify the input pressure of one or more actuators. As it is entirely pneumatic it can be used when electric devices are not recommended.

The booster can be supplied with or without a pressure regulator. It is fitted with check valves that maintain the outlet pressure even when the supply of compressed air is switched off. This means it is necessary to interrupt the supply and relieve the circuit before intervening on the device in any way. It is advisable to install a tank after the booster to prevent fluctuations in outlet pressure.

Details

| | |
|----------------------|--|
| Medium suitability: | Filtered air without lubrication; lubrication, if used, must be continuous |
| Connection: | Female thread G 1/8" |
| Inlet pressure: | 2 ÷ 10 |
| Outlet pressure: | max. 20 |
| Working temperature: | -10°C – +60°C |
| Installation: | Wall or panel |
| Mounting position: | In any position |
| Weight in kg: | 1,38 |



Dimensions

| | |
|-----------------|----|
| Diameter in mm: | 40 |
|-----------------|----|

