

## Datasheet of 0227700000 – Two hand safety valve series Safe Air® complete pushbutton panel

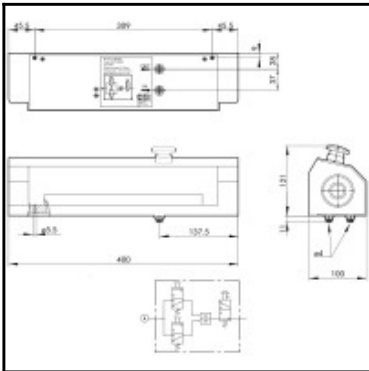


### Description

Two hand safety valve series Safe Air® complete pushbutton panel

The two hand safety valve generates an output signal only if two synchronised pneumatic input signals are received. If one input signal is interrupted, the output signal is interrupted as well. The most common application involves connecting a manual button-controlled valve to each of the inputs and using the output signal as a start-of-cycle control for a pneumatically-operated machine. The two hand safety valve can be secured with through screws or a DIN bar adaptor. The complete pushbutton panel includes the dual manual control valve, two manual pushbuttons, and an emergency stop valve, all housed in a metal box to be mounted on a wall or stand. The pushbutton housing is supplied on request for anyone wishing to get a personalised pneumatic connection or drill holes to secure the unit.

### Details



Flow rate in l/min:	85 (at 6 bar)
Medium suitability:	Gefilterte, ungeölte Druckluft max 50 µm
Connection:	Push-in fitting 4 mm outside calibrated
Working temperature:	-10°C – +60°C
Mounting position:	In any position
Execution:	Einzelsignal - vollständige Tasterausstattung
Maximum time offset between input signals in s:	0,4
Reaction time in s:	< 0,05
Actuation:	Pneumatic
Resetting:	spring operated
Working pressure:	2,5 – 8 bar
Bore in mm:	2,7
Material body:	Pressure die-cast and painted aluminium alloy
Weight in kg:	1,783

### Dimensions