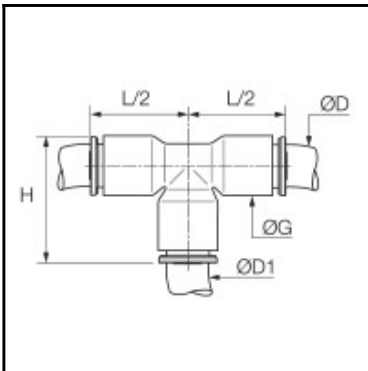


Datasheet of 6804 12 00 Equal tee



Description

Equal tee CleanFit®, Biobased raw materials, 12 mm, 12 mm

Tee connection at a 90° angle of 3 tubes of equal or different diameters

Robust eco-conception, aesthetic design and superior level of cleanliness for a perfect compatibility

Airtight, antistatic packaging

Full flow

100 % leak-tested, date coding to guarantee quality and traceability

ASTM G93-03 B 300, ISO 15001, VDI 2083

Conform to CGA G4.1 and DI93/42/EC

Details

ØD:	12 mm
ØD1:	12 mm
G:	19
H:	40
L2:	31
Maximum working pressure in bar:	15
Material seal:	EPDM
Material body:	Biobased raw materials
Material toothed washer:	Stainless steel
min. temperature in °C:	-10
max. temperature in °C:	95
Vacuum resistance in mm Hg:	755
Material:	Biobased raw materials
RoHS compliant:	Yes
Weight in kg:	0,014

Dimensions

ØD:	12 mm
ØD1:	12 mm
G:	19
H:	40
L2:	31