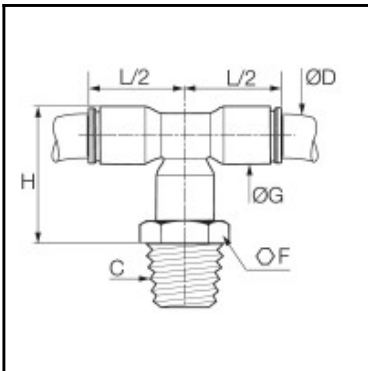


## Datasheet of 6878 08 10 Stud branch tee



### Description

Stud branch tee CleanFit®, Biobased raw materials, 8 mm, R1/8"

In line connection of 2 tubes and at a 90° angle to a threaded port  
Robust eco-conception, aesthetic design and superior level of cleanliness for a perfect compatibility  
Airtight, antistatic packaging  
Full flow  
100 % leak-tested, date coding to guarantee quality and traceability  
ASTM G93-03 B 300, ISO 15001, VDI 2083  
Conform to CGA G4.1 and DI93/42/EC

### Details

ØD:	8 mm
C:	R1/8"
F:	19
G:	13,5
H:	34
L2:	23
Maximum working pressure in bar:	15
Material seal:	EPDM
Material body:	Biobased raw materials
Material threaded fitting:	Brass nickel plated chemical fda brass
Material toothed washer:	Stainless steel
min. temperature in °C:	-10
max. temperature in °C:	95
Vacuum resistance in mm Hg:	755
Material:	Biobased raw materials
RoHS compliant:	Yes
Weight in kg:	0,012

### Dimensions

ØD:	8 mm
C:	R1/8"
F:	19
G:	13,5
H:	34
L2:	23