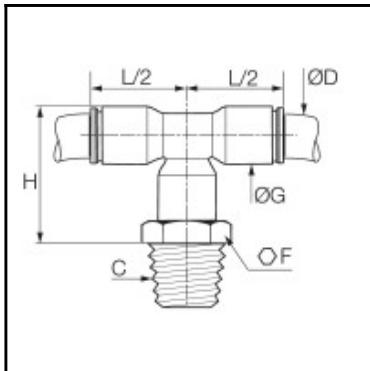


Datasheet of 6878 06 13 Stud branch tee



Description

Stud branch tee CleanFit®, Biobased raw materials, 6 mm, R1/4"

In line connection of 2 tubes and at a 90° angle to a threaded port
Robust eco-conception, aesthetic design and superior level of cleanliness for a perfect compatibility
Airtight, antistatic packaging
Full flow
100 % leak-tested, date coding to guarantee quality and traceability
ASTM G93-03 B 300, ISO 15001, VDI 2083
Conform to CGA G4.1 and DI93/42/EC

Details

ØD:	6 mm
C:	R1/4"
F:	14
G:	10,5
H:	28
L2:	18
Maximum working pressure in bar:	15
Material seal:	EPDM
Material body:	Biobased raw materials
Material threaded fitting:	Brass nickel plated chemical fda brass
Material toothed washer:	Stainless steel
min. temperature in °C:	-10
max. temperature in °C:	95
Vacuum resistance in mm Hg:	755
Material:	Biobased raw materials
RoHS compliant:	Yes
Weight in kg:	0,009

Dimensions

ØD:	6 mm
C:	R1/4"
F:	14
G:	10,5
H:	28
L2:	18