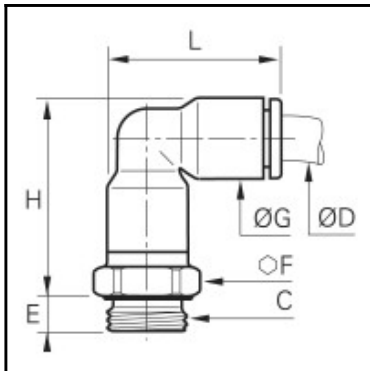


Datasheet of 6899 06 13 Stud elbow



Description

Stud elbow CleanFit®, Biobased raw materials, 6 mm, G1/4"

Connection of tubing at 90° with a male thread. Tightened on the top of the fitting with a flat spanner or socket wrench.

Robust eco-conception, aesthetic design and superior level of cleanliness for a perfect compatibility
Airtight, antistatic packaging

Full flow

100 % leak-tested, date coding to guarantee quality and traceability

ASTM G93-03 B 300, ISO 15001, VDI 2083

Conform to CGA G4.1 and DI93/42/EC

Details

| | |
|----------------------------------|--|
| ØD: | 6 mm |
| C: | G1/4" |
| E: | 5,5 |
| F: | 16 |
| G: | 10,5 |
| H: | 26,5 |
| L: | 22,5 |
| Maximum working pressure in bar: | 15 |
| Material seal: | EPDM |
| Material body: | Biobased raw materials |
| Material threaded fitting: | Brass nickel plated chemical fda brass |
| Material toothed washer: | Stainless steel |
| min. temperature in °C: | -10 |
| max. temperature in °C: | 95 |
| Vacuum resistance in mm Hg: | 755 |
| Material: | Biobased raw materials |
| Special feature: | schwenkbar |
| RoHS compliant: | Yes |
| Weight in kg: | 0,011 |

Dimensions

| | |
|-----|-------|
| ØD: | 6 mm |
| C: | G1/4" |
| E: | 5,5 |
| F: | 16 |
| G: | 10,5 |
| H: | 26,5 |
| L: | 22,5 |