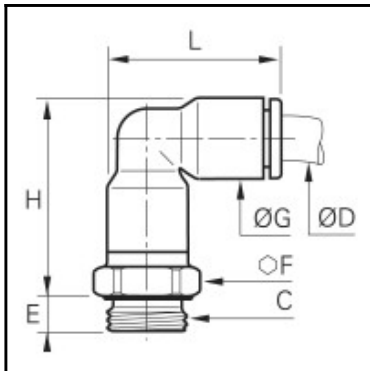


## Datasheet of 6899 04 13 Stud elbow



### Description

Stud elbow CleanFit®, Biobased raw materials, 4 mm, G1/4"

Connection of tubing at 90° with a male thread. Tightened on the top of the fitting with a flat spanner or socket wrench.

Robust eco-conception, aesthetic design and superior level of cleanliness for a perfect compatibility  
Airtight, antistatic packaging

Full flow

100 % leak-tested, date coding to guarantee quality and traceability

ASTM G93-03 B 300, ISO 15001, VDI 2083

Conform to CGA G4.1 and DI93/42/EC

### Details

ØD:	4 mm
C:	G1/4"
E:	5,5
F:	16
G:	8,5
H:	22,5
L:	19
Maximum working pressure in bar:	15
Material seal:	EPDM
Material body:	Biobased raw materials
Material threaded fitting:	Brass nickel plated chemical fda brass
Material toothed washer:	Stainless steel
min. temperature in °C:	-10
max. temperature in °C:	95
Vacuum resistance in mm Hg:	755
Material:	Biobased raw materials
Special feature:	schwenkbar
RoHS compliant:	Yes
Weight in kg:	0,011

### Dimensions

ØD:	4 mm
C:	G1/4"
E:	5,5
F:	16
G:	8,5
H:	22,5
L:	19