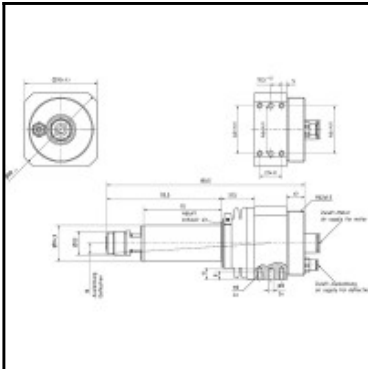


## Datasheet of ESR 280 Air grinding spindle



### Description

28.000 min<sup>-1</sup>, 380 Watt

- Large revolution speed and power ranges for different deburring tasks
- Easy to mount horizontally or vertically onto a tool stand due to cuboid housing
- Easy to mount to a robot arm by thread connection
- Highest true running accuracy, load capability and best deburring results due to paired ball bearings

All data related to 6.3 bar working pressure.

### Details

Idling speed rpm:	28000
Air supply:	lubricated
Power in kW:	0.38
Radial deflection:	+/- 4°
Direction of rotation:	Rotating clockwise
Exhaust Air:	to front
ER collet in mm:	6
Fully variable force of compliance in N:	10 - 55
Force of compliance max.* in N:	200
Noise level in dB(A):	80
Air consumption in l/s:	11,5
Accessories supplied:	Wrench
Anschluss Zuluftschlauch (Blitz) ø mm, innen \ außen:	6 \ 8
Item number:	60019995
Weight in kg:	1,9

### Dimensions