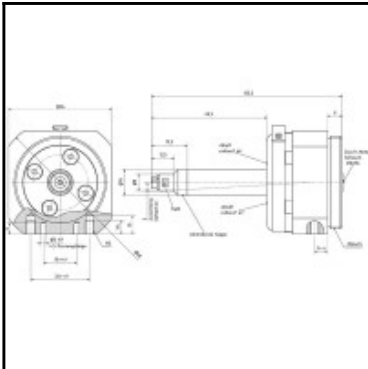
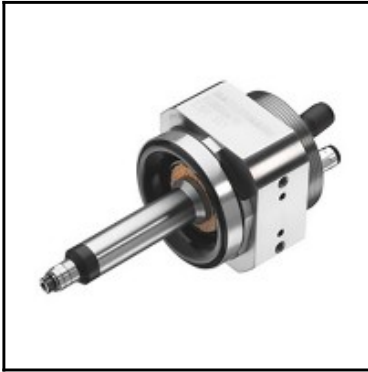


## Datasheet of ESR 551 FW Air grinding spindle



### Description

55.000 min<sup>-1</sup>, 100 Watt

- High true-running accuracy for long endurance run times
- High revolution speed for excellent surface finishing
- The force of compliance can be set and adjusted precisely by using a precision pressure regulator

All data related to 6.3 bar working pressure.

### Details

Idling speed rpm:	55000
Air supply:	lubricated
Power in kW:	100
Radial deflection:	+/- 4°
Direction of rotation:	Rotating clockwise
Exhaust Air:	to front
ZG collet in mm:	3
Pre-adjusted force of compliance in N:	5 - 7
Noise level in dB(A):	78
Air consumption in l/s:	2,3
Accessories supplied:	Wrenches, Springs
Anschluss Zuluftschlauch (Blitz) ø mm, innen \ außen:	2,7 \ 4
Item number:	29948665
Weight in kg:	0,57

### Dimensions