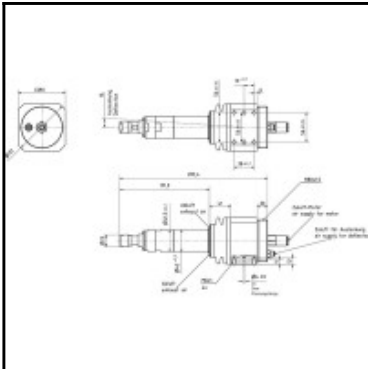


## Datasheet of ESR 38 -520 Air grinding spindle



### Description

520 min<sup>-1</sup>, 380 Watt, ESR 38-520 for rubbing and deburring of drill holes and intersections

- ESR 38-520 for rubbing and deburring of drill holes and intersections

All data related to 6.3 bar working pressure.

### Details

Idling speed rpm:	520
Air supply:	lubricated
Power in kW:	380
Radial deflection:	+/- 4°
Direction of rotation:	Rotating clockwise
Exhaust Air:	to front
ER collet in mm:	6
Compliance force range in N:	18 - 75
Force of compliance max.* in N:	200
Noise level in dB(A):	80
Air consumption in l/s:	8,3
Accessories supplied:	Wrench
Anschluss Zuluftschlauch (Blitz) ø mm, innen \ außen:	10 \ 12
Item number:	29948435
Weight in kg:	4,9

### Dimensions