

Datasheet of ESR 1000 Air grinding spindle



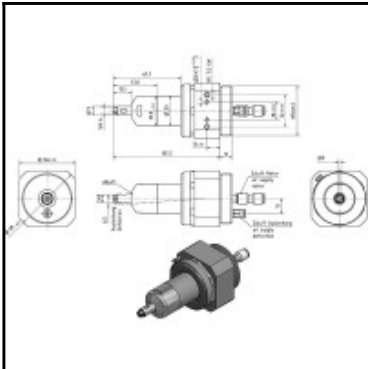
Description

100.000 min⁻¹, 100 Watt, non-lubricated use, floating support

- High true-running accuracy for long endurance run times
- High revolution speed for excellent surface finishing
- For non-lubricated use, practically wearless, with floating spindle support
- Easy to service turbine motor
- Ideal for plastics and other materials which require non-lubricated and clean air
- The force of compliance can be set and adjusted precisely by using a precision pressure regulator

All data related to 6.3 bar working pressure.

Details



Idling speed rpm:	100000
Air supply:	Non-lubricated
Power in kW:	0,1
Radial deflection:	+/- 4°
Direction of rotation:	Rotating clockwise
Exhaust Air:	to front
ZG collet in mm:	3
Fully variable force of compliance in N:	4 - 12
Noise level in dB(A):	70
Air consumption in l/s:	5,3
Accessories supplied:	Wrench
Anschluss Zuluftschlauch (Blitz) ø mm, innen \ außen:	2,7 \ 4
Item number:	60007425
Weight in kg:	0,82

Dimensions