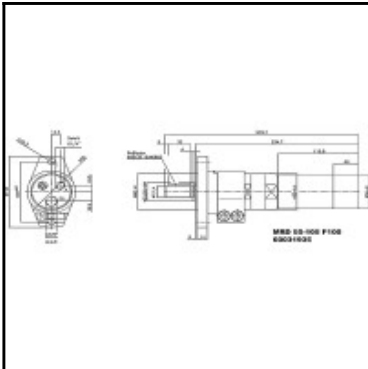
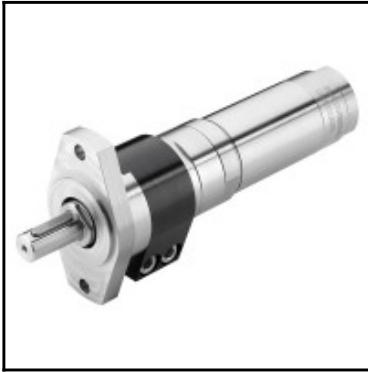


Datasheet of MRD 55-105 F100 Air motor



Description

Air motor, rotating clockwise, speed under load 105 rpm, torque 56 Nm, start torque 84 Nm

The robustness distinguishes the air motor as unproblematic drive engine. It is well utilised in industrial sectors where accuracy and longevity are required. Its high starting torque and the wide torque range qualifies it for many needs in the drive section. All data related to 6.3 bar working pressure.

Details

Speed under load in rpm:	105
Torque in Nm:	56
Start torque in Nm:	84
Idling speed rpm:	210
Non-lubricated:	No
Torque in Nm:	56
Power in kW:	0,62
Maximum torque in Nm:	112
Air consumption in l/s:	14,6
Shaft load Fr max. in N:	3900
Shaft load Fa max. in N:	1800
Direction of rotation:	Rotating clockwise
Resistant to stalling:	Yes
ATEX available:	Yes
Brake:	No
Material:	Stainless steel
Weight in kg:	5,5
Item number:	60031937

Dimensions

Hose Inner diameter in mm:	10
----------------------------	----