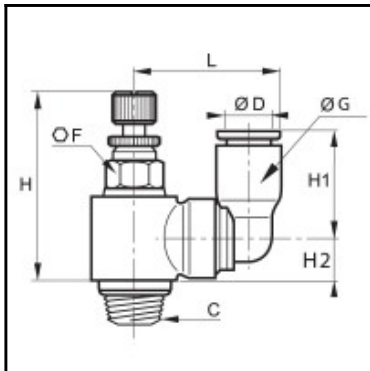


## Datasheet of 7645 04 10 Flow regulator



### Description

Polymer flow regulators, Miniature-Flow regulator, exhaust, made of polymer, 4 mm - R1/8

Non-return throttle valve, threaded, made of plastic:

- swivel outlet banjo with external screw and push-in connection, R- or NPT-thread
- external screw for throttling exhaust air
- reliable, precise and progressive adjustment
- lock nut guaranteeing stability of adjustment
- perfectly suited to solve the most difficult connection issues thanks to its orientability
- perfectly adapted to solve the most difficult connection issues thanks to its orientability and small size

### Details

ØD:	4 mm
C:	R1/8"
F:	7
G:	11,5
G1:	8,5
H min:	25
H max:	27,5
H1:	14
H2:	6
J:	11,5
L:	19,5
Maximum working pressure in bar:	10
Seal coating:	PTFE
Material seal:	NBR
Material adjusting spindle:	Brass nickel plated
Material body:	Engineered polymer
Material locknut:	Brass nickel plated
Material toothed washer:	Stainless steel
max. temperature in °C:	70
RoHS compliant:	Yes
Weight in kg:	0,014

### Dimensions

ØD:	4 mm
C:	R1/8"
F:	7
G:	11,5
G1:	8,5
H min:	25
H max:	27,5
H1:	14
H2:	6
J:	11,5
L:	19,5