

## Datasheet of 7011 08 17 Flow regulator



### Description

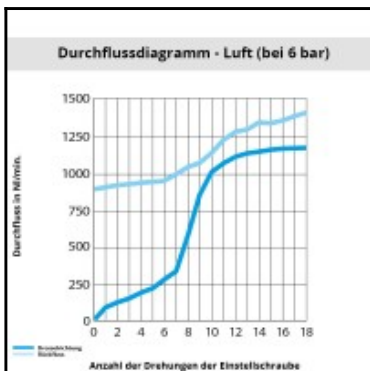
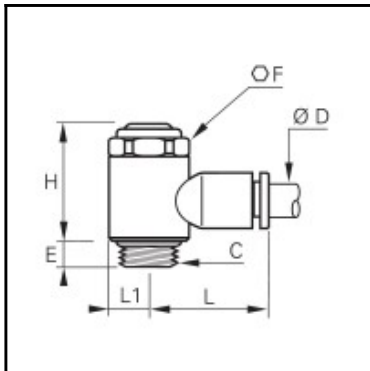
Polymer flow regulators, supply-regulator made of polymer, 8 mm - G3/8

Non-return throttle valve, threaded, made of plastic:

- banjo with threaded connections
- with recessed screw for throttling supply air
- reliable and progressive adjustment with a screwdriver guaranteeing stability of adjustment
- strong construction for improved longevity
- for use in all pneumatic installations due to their high performance capability and small size

### Details

ØD:	8 mm
C:	G3/8"
E:	7,5
F:	20
H:	37,5
L:	29
L1:	11
Maximum working pressure in bar:	10
Material seal:	NBR
Material adjusting spindle:	Brass nickel plated
Material body:	Engineered polymer
Material body 2:	Brass nickel plated
Material toothed washer:	Stainless steel
max. temperature in °C:	70
RoHS compliant:	Yes
Weight in kg:	0,067



### Dimensions

ØD:	8 mm
C:	G3/8"
E:	7,5
F:	20
H:	37,5
L:	29
L1:	11