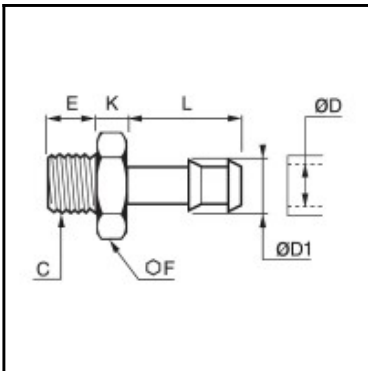


## Datasheet of 0931 08 17 Quick-acting barbed fitting



### Description

Quick-acting barbed fittings made of brass, tailpiece adaptor for plastic tube, male thread, G3/8 - 8 mm

Quick connection of self-fastening hose to a male port. Available in 6 to 18 mm outer diameter.

### Details

|                                  |                     |
|----------------------------------|---------------------|
| ØD:                              | 8 mm                |
| ØD1:                             | 9 mm                |
| C:                               | G3/8"               |
| E:                               | 9                   |
| F:                               | 19                  |
| K:                               | 5                   |
| L:                               | 19                  |
| Maximum working pressure in bar: | 60                  |
| Material body:                   | Brass nickel plated |
| min. temperature in °C:          | -10                 |
| max. temperature in °C:          | 80                  |
| RoHS compliant:                  | Yes                 |
| Weight in kg:                    | 0,022               |

### Dimensions

|      |       |
|------|-------|
| ØD:  | 8 mm  |
| ØD1: | 9 mm  |
| C:   | G3/8" |
| E:   | 9     |
| F:   | 19    |
| K:   | 5     |
| L:   | 19    |