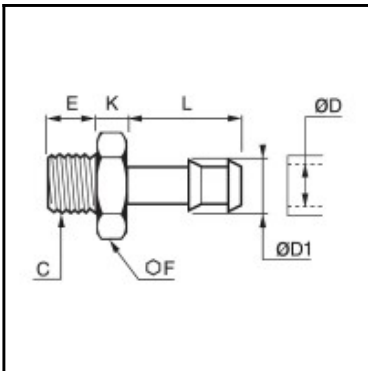


Datasheet of 0931 07 13 Quick-acting barbed fitting



Description

Quick-acting barbed fittings made of brass, tailpiece adaptor for plastic tube, male thread, G1/4 - 7 mm

Quick connection of self-fastening hose to a male port. Available in 6 to 18 mm outer diameter.

Details

ØD:	7 mm
ØD1:	8 mm
C:	G1/4"
E:	8
F:	14
K:	5
L:	19
Maximum working pressure in bar:	60
Material body:	Brass nickel plated
min. temperature in °C:	-10
max. temperature in °C:	80
RoHS compliant:	Yes
Weight in kg:	0,013

Dimensions

ØD:	7 mm
ØD1:	8 mm
C:	G1/4"
E:	8
F:	14
K:	5
L:	19