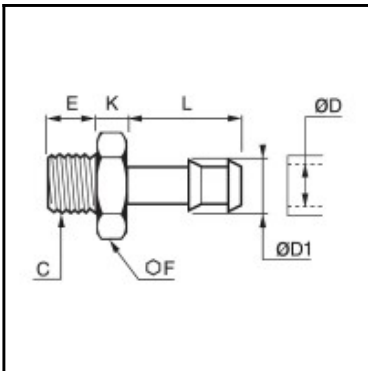


Datasheet of 0931 07 10 Quick-acting barbed fitting



Description

Quick-acting barbed fittings made of brass, tailpiece adaptor for plastic tube, male thread, G1/8 - 7 mm

Quick connection of self-fastening hose to a male port. Available in 6 to 18 mm outer diameter.

Details

| | |
|----------------------------------|---------------------|
| ØD: | 7 mm |
| ØD1: | 8 mm |
| C: | G1/8" |
| E: | 6 |
| F: | 12 |
| K: | 4 |
| L: | 19 |
| Maximum working pressure in bar: | 60 |
| Material body: | Brass nickel plated |
| min. temperature in °C: | -10 |
| max. temperature in °C: | 80 |
| RoHS compliant: | Yes |
| Weight in kg: | 0,009 |

Dimensions

| | |
|------|-------|
| ØD: | 7 mm |
| ØD1: | 8 mm |
| C: | G1/8" |
| E: | 6 |
| F: | 12 |
| K: | 4 |
| L: | 19 |