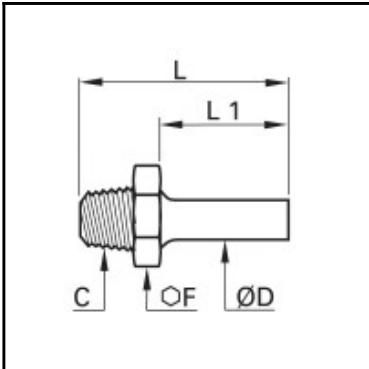


Datasheet of 0120 28 34 Straight stem adaptor



Description

Compression fittings made of brass, Straight stem adaptor, 28 mm - R1

Male thread straight stem adaptor, with male thread connection. Available from 4 to 28 mm o.d..

Details

ØD:	28 mm
C:	R1"
F:	36
L:	57
L1:	30
Maximum working pressure in bar:	550
Material body:	Brass
min. temperature in °C:	-60
max. temperature in °C:	250
RoHS compliant:	Yes
Weight in kg:	0,14

Dimensions

ØD:	28 mm
C:	R1"
F:	36
L:	57
L1:	30