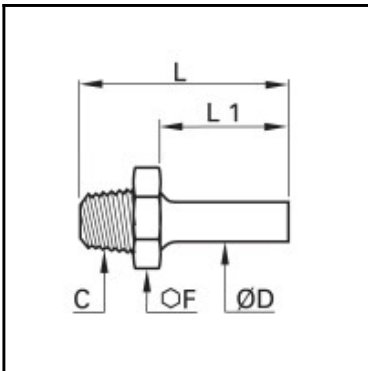


Datasheet of 0120 22 27 Straight stem adaptor



Description

Compression fittings made of brass, Straight stem adaptor, 22 mm - R3/4

Male thread straight stem adaptor, with male thread connection. Available from 4 to 28 mm o.d..

Details

ØD:	22 mm
C:	R3/4"
F:	27
L:	48,5
L1:	25,5
Maximum working pressure in bar:	550
Material body:	Brass
min. temperature in °C:	-60
max. temperature in °C:	250
RoHS compliant:	Yes
Weight in kg:	0,067

Dimensions

ØD:	22 mm
C:	R3/4"
F:	27
L:	48,5
L1:	25,5