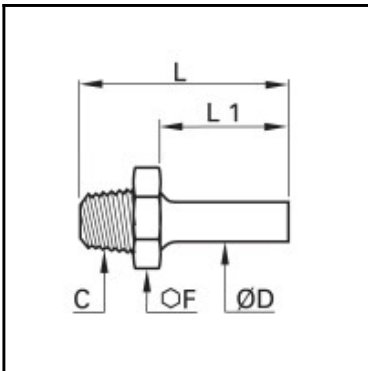


## Datasheet of 0120 20 27 Straight stem adaptor



### Description

Compression fittings made of brass, Straight stem adaptor, 20 mm - R3/4

Male thread straight stem adaptor, with male thread connection. Available from 4 to 28 mm o.d..

### Details

ØD:	20 mm
C:	R3/4"
F:	27
L:	49
L1:	25
Maximum working pressure in bar:	550
Material body:	Brass
min. temperature in °C:	-60
max. temperature in °C:	250
RoHS compliant:	Yes
Weight in kg:	0,07

### Dimensions

ØD:	20 mm
C:	R3/4"
F:	27
L:	49
L1:	25