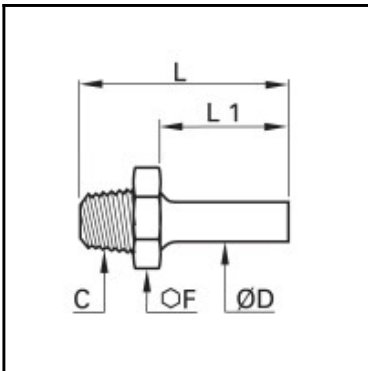


## Datasheet of 0120 10 13 Straight stem adaptor



### Description

Compression fittings made of brass, Straight stem adaptor, 10 mm - R1/4"

Male thread straight stem adaptor, with male thread connection. Available from 4 to 28 mm o.d..

### Details

ØD:	10 mm
C:	R1/4"
F:	14
L:	36
L1:	20
Maximum working pressure in bar:	550
Material body:	Brass
min. temperature in °C:	-60
max. temperature in °C:	250
RoHS compliant:	Yes
Weight in kg:	0,018

### Dimensions

ØD:	10 mm
C:	R1/4"
F:	14
L:	36
L1:	20