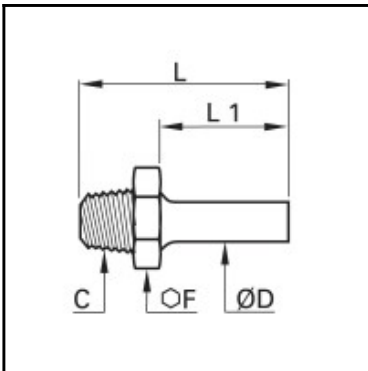


Datasheet of 0120 08 17 Straight stem adaptor



Description

Compression fittings made of brass, Straight stem adaptor, 8 mm - R3/8

Male thread straight stem adaptor, with male thread connection. Available from 4 to 28 mm o.d..

Details

ØD:	8 mm
C:	R3/8"
F:	17
L:	33,5
L1:	17
Maximum working pressure in bar:	550
Material body:	Brass
min. temperature in °C:	-60
max. temperature in °C:	250
RoHS compliant:	Yes
Weight in kg:	0,021

Dimensions

ØD:	8 mm
C:	R3/8"
F:	17
L:	33,5
L1:	17