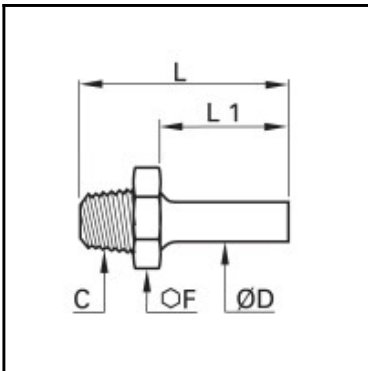


Datasheet of 0120 04 10 Straight stem adaptor



Description

Compression fittings made of brass, Straight stem adaptor, 4 mm - R1/8

Male thread straight stem adaptor, with male thread connection. Available from 4 to 28 mm o.d..

Details

ØD:	4 mm
C:	R1/8"
F:	11
L:	25,5
L1:	14
Maximum working pressure in bar:	550
Material body:	Brass
min. temperature in °C:	-60
max. temperature in °C:	250
RoHS compliant:	Yes
Weight in kg:	0,007

Dimensions

ØD:	4 mm
C:	R1/8"
F:	11
L:	25,5
L1:	14